



---

# PRODUCT GUIDE





# 25

25 YEARS  
OF EXPERIENCE  
1992-2017

| SRS Group s.r.o.  
Rybnicna 36/D  
831 07 Bratislava  
Slovak Republic

| [www.srs-group.com](http://www.srs-group.com)  
[sales@srs-group.com](mailto:sales@srs-group.com)  
phone: +421 2 4468 1417  
fax: +421 2 4468 1419

| The value of experience can be understood only when it is gained. It influences people, their decisions, it opens doors to new solutions and gives the ability to make something new and progressive.

Robert Sloboda

# GLOSSARY

## SRS GENERATOR™ TECHNOLOGY

SRS Generator is a technology that uses a unique module which makes it possible to run the dimming devices even on generators that do not have stable frequency output. The result is smooth dimming without any fuzziness.

## SRS THERMAL™ MANAGEMENT

SRS devices are 100% duty cycle rated – they can run at full load, continuously, for any length of time without overheating. The heat sink is big enough to keep the temperature on low level that guarantees reliability and long time functionality. That is the reason why our units are more than 30% heavier than competitors' units.

## SRS S-DRIVE™ TECHNOLOGY

Removes any barriers of the minimum load connected to the dimmer output. It does not matter whether you are using the inductive load or resistive load – the dimmer will always have smooth dimming, starting from the zero loads to the maximum loads.

## SRS W-DMX® TRUE OUT

Converts W-DMX® to the regular DMX signal and splits to all DMX outputs. This saves your money for additional W-DMX® receiver and also offers you the option to use the other DMX equipment connected to an W-DMX® true out capable device.

## SRS VARIOSPEED™ FAN

Mag-Lev fans are used. These fans are extremely quiet and have a life span that is almost ten times longer than the bearing fan. We use variable speed control depending on the inner temperature and load of the circuits.

## SRS ULTISENSE™ SOFTWARE

Software allows you to communicate & configure the entire range of SRS Ethernet capable devices and S.net network. It offers comprehensive real-time status reports at any time.

## 400 μs SRS STUDIO™ RISETIME

SRS Studio Risetime guarantees that the Risetime of the dimmer channels is not less than 400μs measured 10–90% on nominal load. 400μs risetime is a top of value currently used in TV studios environment.

## 1P+N 1P+N RELAY SRS 1P+N PROTECTION

A device equipped with the 1P+N protection of output channels requested by some legal authorities.

## SRS CUSTOMIZATION®

We can offer you hardware or software customization of the product. There is also the option to create a brand new device according to your needs.

## RDM SRS RDM DEVICES

DMX device equipped with the RDM module for remote monitoring and setting through the DMX in accordance with the RDM specification.

## SRS WORLDWIDE USAGE®

Devices created for worldwide usage, equipped with the full range power supply.

## SRS SWITCH CONTROL

Device controlled by DMX and also by the switch – all over the DMX cable. That allows you to use the device without the DMX console even on small venues or as a part of a scene controlled by actors on stage.

## 5 SRS 5-YEAR WARRANTY

Under our 5-year warranty, we guarantee repairs or replacements of our product without any fees, in the shortest time possible.

## SRS LIFE-TIME WARRANTY

No questions, no complains, no refused warranty repairs. Repair or replacement of our product without any fees in the shortest time possible. During warranty repair we will supply a replacement device for free.

# CONTENT

## DIMMING

## PORTABLE DIMMING

## TOURING SYSTEMS

## SWITCHING

## DATA DISTRIBUTION

## SPECIAL DEVICES



DIMMING

PORTABLE DIMMING

TOURING SYSTEMS

SWITCHING

DATA DISTRIBUTION

SPECIAL DEVICES



# DIMMING

## NDP SERIES

NDPseries offers the highest quality of dimming available for any type of application – fixed or mobile. Excellent bullet-proof dimming with the latest high-end features: SRS S-Drive, SRS Studio Risettime chokes, Ethernet communication, graphic LCD display with all information including bargraph, measured values, W-DMX® signal strength, DMX signal status, real-time monitoring of outputs and many other features packed in a solid metal case.



### NDP6 / NDP12

- Variable power modules
- Full-graphic LCD display with intelligent backlight
- Multilingual interface
- Simple navigation in menus with encoder and 2 buttons
- Output load check
- Ethernet port
- 2x DMX512
- USB port

### OUTPUTS

- Screw terminal
- 12x Schuko
- 12x French Schuko
- 12x Swiss
- 12x Danish
- 12x UK
- 2x Harting® 6-pin
- 3x Harting® 10-pin
- 2/4x Harting® 16-pin
- Harting® 24-pin
- Socapex® 19-pin
- 12x CEE16/3p
- 6x CEE32/3p
- Neutrik® powerCON 32 Amp

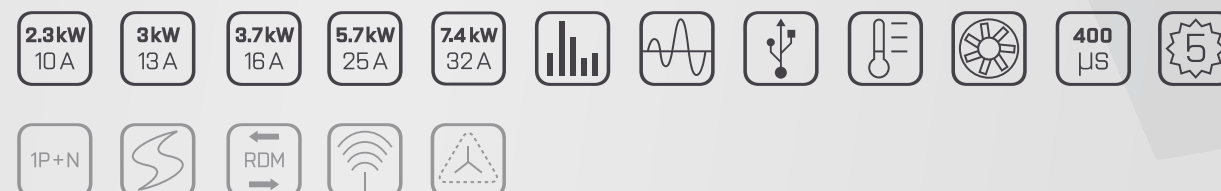


### NDP6 WM / NDP12 WM

- Variable power modules
- Full-graphic LCD display with intelligent backlight
- Multilingual interface
- Simple navigation in menus with encoder and 2 buttons
- Output load check
- Ethernet port
- 2x DMX512
- USB port

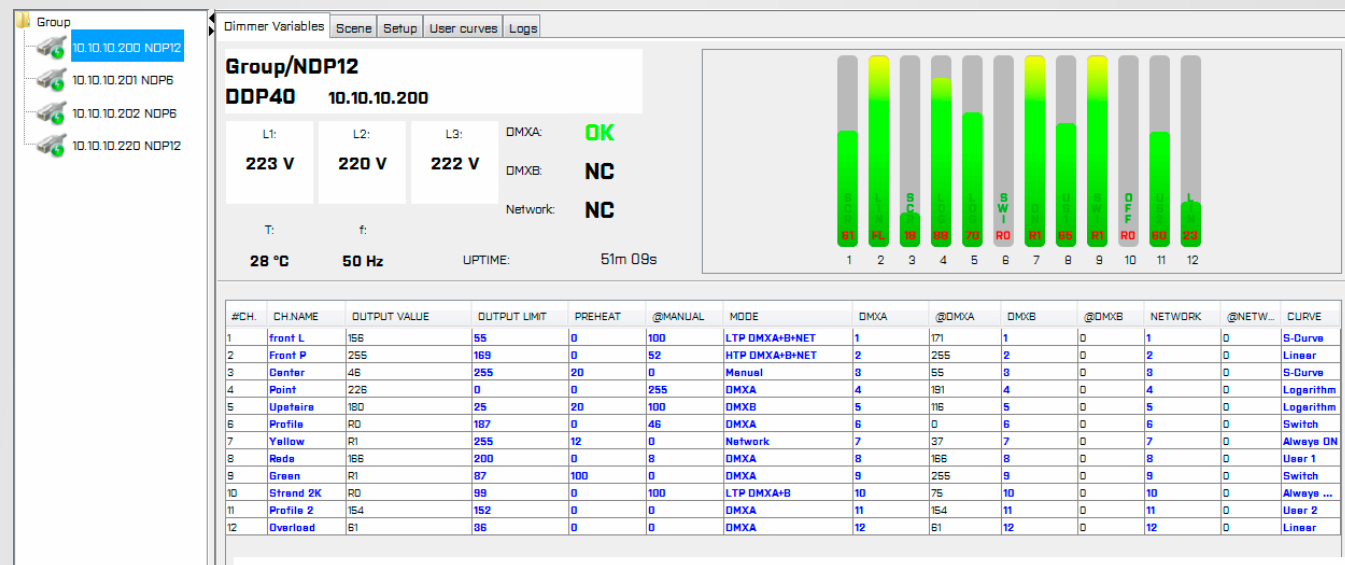
Thanks to the idea of network connection, NDPseries can be controlled via various signal sources: two DMX ports, W-DMX®, Ethernet protocols S.net, or ART-Net™ or simple just with the pre-programmed scenes or manual mode.

Future software update via an USB port takes only a few seconds.





# ULTISENSE SOFTWARE



UltiSense software is a JAVA based application compatible with PC/MAC/LINUX platforms. It enables full control and configuration of the entire range of SRS Ethernet capable devices and the S.net network. With remote access via Ethernet to the devices it opens new horizons in remote management in rental or architectural environments and with comprehensive real-time status reports you have all necessary information on your laptop, PDA or MAC.

## REAL-TIME MONITORING

- Voltage & current of each phase
- Temperature & frequency
- Power factor
- Power consumption
- Short circuit, No load, Load fail
- Dimmer level, curves
- W-DMX®
- Uptime of all devices
- Communication logs

## PROPERTIES

- Dimming rooms
- Racks/dimming units
- SRS nodes, CAT-5 extenders, RDM, ..

## SAVE, LOAD & COMPARE

- Projects snapshots
- Project properties
- Installed/actual values
- Power consumed on job/tour/totally

## S.net NETWORK

- Based on Ethernet, CAT-5, 10/100Mbit
- Wired or W-Fi connection with encoding
- GSM connection for monitoring the installation

## S.net RENTAL

With the SRS UltiSense computerized control system you have a complete real-time reporting facility and the option to setup the dimming with just few clicks. Software opens new horizons of the real Ethernet communication usage between all parts of S.net network.

The possibility to remotely reload settings to all racks on the stage via WI-Fi or Ethernet access gives you the option to use your racks at many venues without spending time on manual setup.

We have created a simple and secure solution for all rental needs.

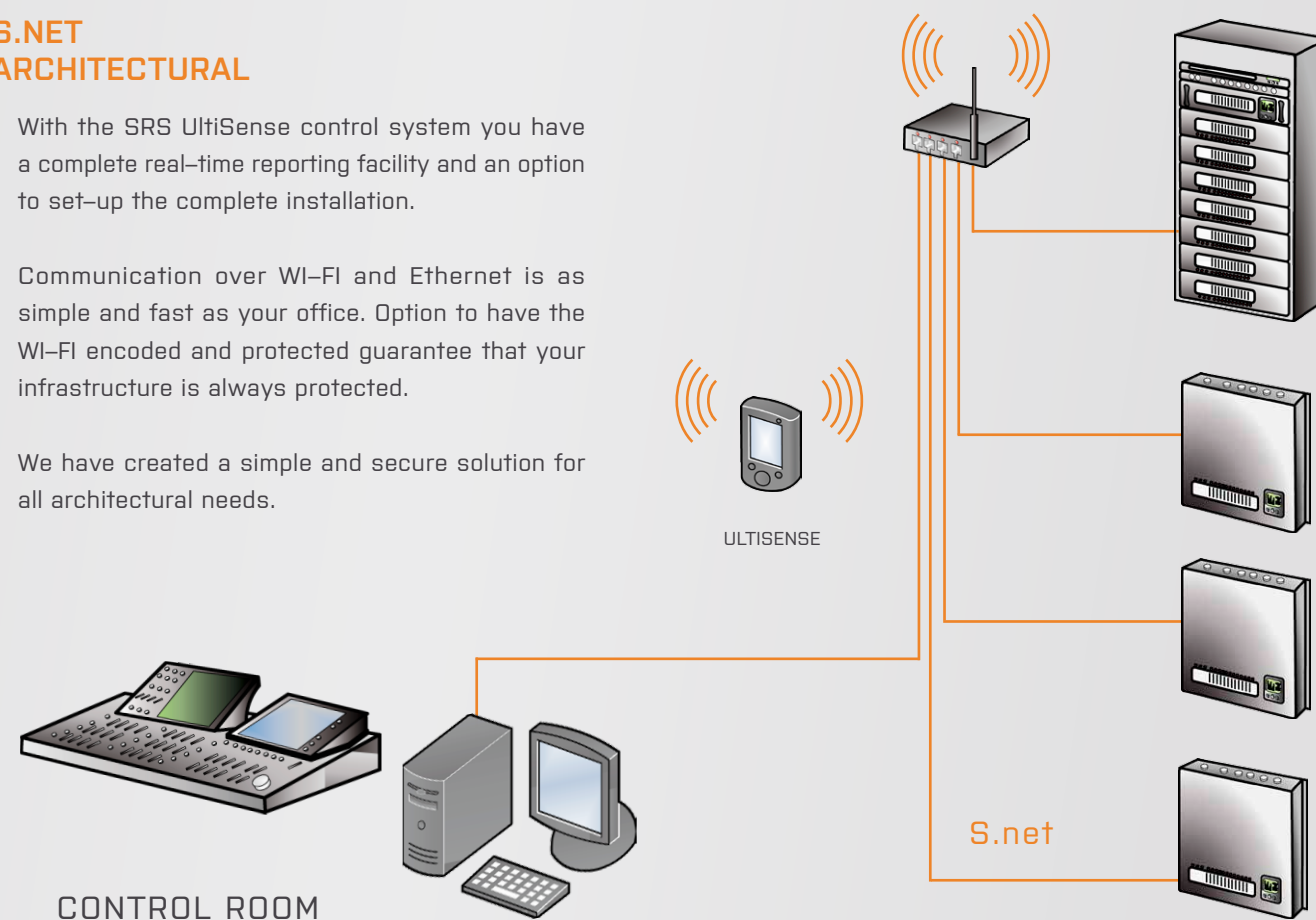


## S.NET ARCHITECTURAL

With the SRS UltiSense control system you have a complete real-time reporting facility and an option to set-up the complete installation.

Communication over WI-Fi and Ethernet is as simple and fast as your office. Option to have the WI-Fi encoded and protected guarantee that your infrastructure is always protected.

We have created a simple and secure solution for all architectural needs.



# SERIES 400

The series400 offers a reliable and affordable 3U 19" rack-mount digital dimming solution with an integrated mains switch or RCD. With SRS Studio Risetime and SRS Generator technologies it is the right choice for rental use. Proven design and huge spare capacity of components mean that you can use this unit on tour with anyone, anytime.



## DDP12

- 12-channel dimmer pack
- 3U, 19" rack-mount with integrated main switch or RCD
- DMX512 / Analog / Manual / Scene
- LCD display + encoder
- Individual & block channel patching, preheats, curves
- Electronic lock
- LTP / HTP
- Sequential test of outputs
- Scenes / DMX fault scripts

## DDP60

- 6-channel dimmer pack
- 3U, 19" rack-mount with integrated main switch or RCD
- DMX512 / Analog / Manual / Scene
- LCD display + encoder
- Individual & block channel patching, preheats, curves
- Electronic lock
- LTP / HTP
- Sequential test of outputs
- Scenes / DMX fault scripts

The series400units have a simple and intuitive menu. Navigation through the menu via encoder and two buttons is easy. The output bargraph is accessible through just one button. Setting of the unit takes only a few minutes.



## OUTPUTS

- Screw terminal
- 12x Schuko
- 12x French Schuko
- 12x Swiss
- 12x Danish
- 12x UK
- 2x Harting® 6-pin
- 3x Harting® 10-pin
- 2/4x Harting® 16-pin
- Harting® 24-pin
- Socapex® 19-pin
- 12x CEE16/3p
- 6x CEE32/3p
- Neutrik® powerCON 32 Amp

2.3kW  
10 A

3kW  
13 A

3.7kW  
16 A

5.7kW  
25 A

7.4kW  
32 A

400  
µs

5



DDP61

- 2U, 19" rack-mount
- DMX512 / Analog / Manual / Scene
- LCD display + encoder
- Individual & block channel patching preheats, curves
- Electronic lock
- LTP / HTP
- Sequential test of outputs
- Scenes / DMX fault scripts



OUTPUTS

- Screw terminal
- 6x Schuko
- 6x French Schuko
- 6x Swiss
- 6x Danish
- 6x UK
- Harting® 16-pin
- Socapex® 19-pin



2.3kW  
10 A

3kW  
13 A

3.7kW  
16 A

1P+N

400 μs

SERIES  
400 WM  
wall mount series

- The series400 WM fixed installation is designed to provide a reliable and affordable plug-in solution for architectural installations. Its low profile and well designed look, which is perfect for wall-mount installations, SRS Thermal management and SRS Variospeed fans assure quiet and long-term operation.
- Series400 WM is designed around the same components as the touring version of series400, with the same unique features proven in rental.



2.3kW  
10 A

3kW  
13 A

3.7kW  
16 A

5.7kW  
25 A

7.4kW  
32 A

400 μs

1P+N

DDP60 WM / DDP12 WM

- Wall-mount with integrated main switch or RCD
- DMX512 / Analog / Manual / Scene
- LCD display + encoder
- Individual & block channel patching, preheats, curves
- Electronic lock
- LTP / HTP
- Sequential test of outputs
- Scenes / DMX fault scripts

OUTPUTS

- Screw terminal
- 12x Schuko
- 12x French Schuko
- 12x Swiss
- 12x Danish
- 12x UK
- 2x Harting® 6-pin
- 3x Harting® 10-pin
- 2/4x Harting® 16-pin
- Harting® 24-pin
- Socapex® 19-pin
- 12x CEE16/3p
- 6x CEE32/3p
- Neutrik® powerCON 32 Amp



# RCK DIMMER PACK

## DDP12-RCK

- 12-channel dimmer pack
- 3U, 19" rack-mount with integrated main switch or RCD
- DMX512 / Analog / Manual / Scene
- LCD display + encoder
- Individual & block channel patching, preheats, curves
- Electronic lock
- LTP / HTP
- Sequential test of outputs
- Scenes / DMX fault scripts

## NDP12-RCK

- Variable power modules
- Full-graphic LCD display with intelligent backlight
- Multilingual interface
- Simple navigation in menus with encoder and 2 buttons
- Output load check
- Ethernet port
- 2x DMX512
- USB port

## RCK HOLDER

- 4U rack-mount unit
- Durable wheels
- Position-adjustable connector
- Customized



2.3kW  
10A

3kW  
13A

3.7kW  
16A

5.7kW  
25A

7.4kW  
32A

400  
µS

1P+N



The RCK system is a perfect solution for fixed installations, where quick and easy replacement of DDP, NDP or SPU units is necessary. This 4U system features durable wheels and connectors that provide trouble-free operation. Several RCK units fit into a custom-made rack to meet the requirements of the venue.

## RCK RACK

Custom-made rack designed for venues, where fixed installations are necessary. Sometimes the dimmer packs have to be exchanged or replaced by other units. The RCK dimmer packs are designed to be swapped easily between each other or to be taken on a tour. This system makes it easy and realistic to happen.





# PORTABLE DIMMING

## DP1 / DP3

- 1x 16A
- DP1: W-DMX® / DMX + fader
- DP3: DMX + fader
- C-clamp holder



### OUTPUTS

- Schuko
- French Schuko
- Swiss
- Danish
- UK
- CEE16/3p
- CEE32/3p
- CEE63/3p
- Neutrik® powerCON

## DP6 / DP12

- DP6: 1x 25A
- DP12: 1x 53A
- Controlled by W-DMX® / DMX + Fader
- Massive aluminum case



Portable dimming devices are reliable and affordable dimming devices with one, four or six channels. Thanks to thier bullet-proof design in an aluminium mono-block and the W-DMX® technology, they are perfect for the use in TV studios and venues requiring ultra portable and quiet operation. Each model can be equipped with a wireless module on request.



## PDP40 / PDP60

- DMX512 / W-DMX / Manual
- LCD display + encoder
- Individual 8 block channel patching, preheats, curves
- Electronic lock
- LTP / HTP
- Single phase / Three-phase operation



## DDP BAR4 / DDP BAR6

- 4/6x dimmer / hot-power
- Aluminium 1.5m / 2.2m long
- W-DMX® / DMX512
- W-DMX® signal bargraph
- Tripod / C-clamp mounting points

### OUTPUTS

- Schuko
- French Schuko
- Swiss
- Danish
- UK
- Neutrik® powerCON
- CEE16/3p





# TOURING SYSTEMS

- | Touring systems are designed as a modular system to provide an affordable and plug-in solution for touring.
- | Systems are produced with 24 up to 96 channels of dimming/hot power. The base of the touring systems is power distribution with optional metering followed by the NDP series or series400 dimming units. Variable patch panels fit easily to the back or the top of a unit.

### INPUTS

- IEC60309 – CEE form
- Socapex® 19-pin
- Harting® 10-pin
- Harting® 16-pin
- Harting® 24-pin
- Twistlock
- Powerlock

### PROTECTION

- Main switch, optional RCD
- Optional 1P+N
- Optional Hydromagnetic breakers

### METERING

- NDPmetering
- Advanced metering
- Simple metering

### OUTPUTS

- IEC60309 – CEE form
- Socapex® 19-pin
- Harting® 10-pin
- Harting® 16-pin
- Harting® 24-pin
- Twistlock
- Powerlock



- | Touring systems are packed in heavy duty custom made flight cases always perfectly protecting your system during transport.
- | All touring systems have a 5-year warranty.

### PATCH

- Wieland GST 18i3
- Wieland GST 15i2

### DATA DISTRIBUTION

- DMX splitter
- Optional W-DMX®
- Optional communication module



- 2.3kW 10 A
- 3kW 13 A
- 3.7kW 16 A
- 5.7kW 25 A
- 400 µs
- 1P+N
- RDM
- 5
- 1P+N
- 5
- 1P+N
- RDM
- 5



# SWITCHING DEVICES



This switching device allows you to control mains power remotely via a DMX line or a manual switch. All switching devices have 1P+N switching required by some regulatory authorities. Each model is equipped with a special 100A pulse resistant relay which allows long LASTING function even in hard operational environment.

For special purposes we are able to deliver custom switching units with an unlimited number of channels, various load per channel, with certification required by regulatory authorities.

### DMX2SW / DMX1SW

- 2x 8A or 1x 16A switching channels
- DMX or switch controlled
- Optical signalization of output state
- Variable outputs

### OUTPUTS

- Schuko
- French Schuko
- Swiss
- Danish
- UK
- CEE16/3p
- CEE32/3p
- Neutrik® powerCON

3.7kW  
16 A

### DP12SW / DP6SW

- 1x 53A or 1x 25A output
- Controlled by W-DMX® / DMX + fader
- Single phase / Three phase operation

### OUTPUTS

- CEE63/3p
- CEE32/3p

5.7kW  
25 A

12kW  
53 A



### SPU32 / SPU16

- Wall-mount
- 32x 0.5A or 16x 1A outputs
- DMX screw terminal
- Single phase operation

3.7kW  
16 A



# SPU

### SPU60 / SPU12

- 3U, 19" rack-mount with integrated main switch or RCD
- DMX512 / Analog / Manual / Scene
- LCD display + encoder
- Individual & block channel patching, preheats
- Electronic lock
- LTP / HTP
- Sequential test of outputs
- Scenes / DMX fault scripts



Digital switch pack SPU12 is designed to fulfill all the requirements for most light demanding applications such as theatres, live concerts and permanent installations, where DMX controlled switching of main power is needed.

The SPU12 unit features SFX function that generates a sound as well as sequence function that is specially made for the sequence control of outputs either automatically, with the start/stop via DMX or via analog.

### SPU60 WM / SPU12 WM

- Wall-mount with integrated main switch or RCD
- DMX512 / Analog / Manual / Scene
- LCD display + encoder
- Individual & block channel patching, preheats
- Electronic lock
- LTP / HTP
- Sequential test of outputs
- Scenes / DMX fault scripts



### OUTPUTS

- Screw terminal
- 12x Schuko
- 12x French Schuko
- 12x Swiss
- 12x Danish
- 12x UK
- 2x Harting® 6-pin
- 3x Harting® 10-pin
- 2/4x Harting® 16-pin
- Harting® 24-pin
- Socapex® 19-pin
- 12x CEE16/3p
- 6x CEE32/3p
- Neutrik® powerCON 32 Amp

2.3kW  
10 A

3kW  
13 A

3.7kW  
16 A

400 µs

1P+N



# DATA DISTRIBUTION

## DSR8W-PRO

- Wireless DMX transceiver / 8-way splitter
- Slide antenna
- Interference free
- W-DMX® Co-Existence mode
- Point / Multipoint operation
- Plug & Play
- LED indicators

## DSR10 / DSR10N

- 1U, 19" rack-mount
- 10-channel DMX splitter 3/5-pin or RJ45
- LED indication of DMX line status



## DSR10AB

- 1U, 19" rack-mount
- 2-channel DMX input A/B
- 10-channel with A/B switch
- LED indication of DMX line status

All W-DMX® products use the license free ISM band, and are certified for usage in the United States, Canada, Japan, and all EU countries. The SRS W-DMX® units use, Frequency Hopping Spread (FHSS) Spectrum, along with a number of other techniques to avoid interference and to create a very reliable wireless link. W-DMX® devices are produced as compatible devices with other producers listed as OEM partners of Wireless Solution and Lumen Radio.

SRS DMX splitters are available in four, eight and ten channel formats. Housed in a 1U high 19" rack mounting case or mounted on truss/wall, they provide the true optic isolation for all DMX lines used on the stage.

LED indicators are checking both signal lines and deliver information when any problem occurs. Each output has a separate driver, optical isolator and power supply to ensure the highest possible level of protection. Amplification allows extension of a DMX link above the maximum length specified by the DMX512 standard. Up to 32 fixtures can be attached to each branch of the DMX line.



## DST4W-PRO

- Wireless DMX transceiver / 4-way splitter
- Slide antenna
- Interference free
- W-DMX® Co-Existence mode
- Point / Multipoint operation
- Plug & Play
- LED indicators



The initial configuration procedure is just as simple as with any other W-DMX® products – just one press of the button is all it takes to search for and link every unallocated receiver

A choice of other antenna is available to increase the standard transmission range of 700m up to incredible 3200m.

## DST4H

- Truss/wall-mount
- 4-channel DMX splitter/booster
- 4-channel AC power 16A splitter
- LED indication of DMX line status
- SRS truss holders

## DST4

- Truss/wall-mount
- 4-channel DMX splitter
- LED indication of DMX line status
- Termination switch with indication
- SRS truss holders



## DSTS4

- Truss / wall-mount
- 4 channel DMX splitter / booster / amplifier
- LED indication of DMX line status
- Small version of DST4
- M10 thread for C-clamp
- Unischuko power cable clamp





W-DMX® RX / TX

- Wireless DMX Receiver or Transmitter
- Interference free
- W-DMX® Co-Existence mode
- Point / Multipoint operation
- Plug & Play

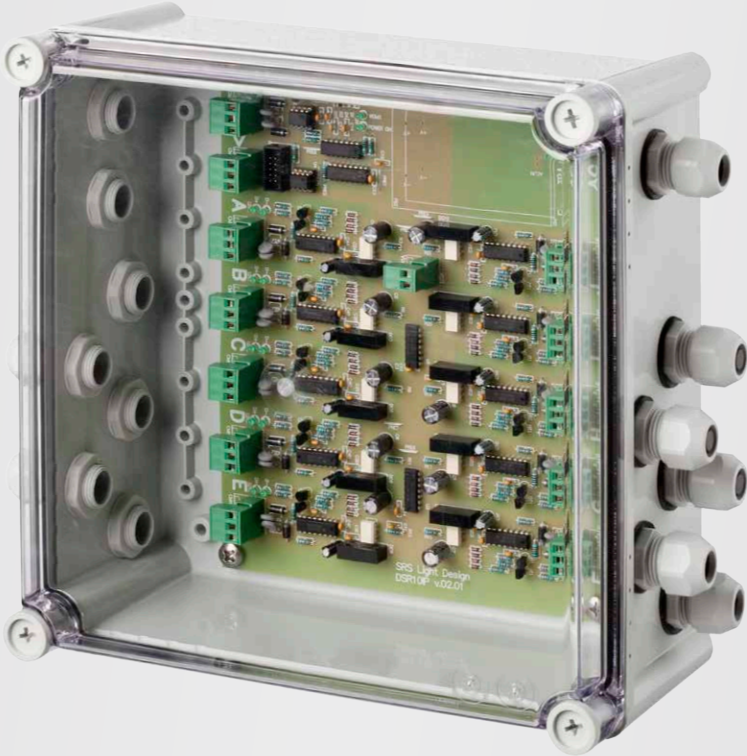
wireless solution

LumenRadio



DST8

- Truss/wall/DIN rail-mount
- 8-channel DMX splitter
- LED indication of DMX line status
- Termination switch with indication



DSR10-IP

- 10-channel DMX splitter/booster
- Plastic IP65 waterproof housing
- Transparent cover for easy orientation
- IO glands, snap-in screw terminals



RDM SPLITTERS



DSR10-RDM

- 1U, 19" rack-mount
- 10-channel DMX/RDM splitter/booster
- Single universe unit
- LED indication of DMX and RDM
- Termination switch
- RDM filter on each output

DSR5.2-RDM

- 1U, 19" rack-mount
- 2x 5-channel DMX/RDM splitter/booster
- Double universe unit
- LED indication of DMX and RDM
- Termination switch
- RDM filter on each output



DST5-RDM

- Truss/wall-mount
- 5-channel DMX/RDM splitter/booster
- LED indication of DMX and RDM
- Termination switch
- RDM filter on each output





# MERGER

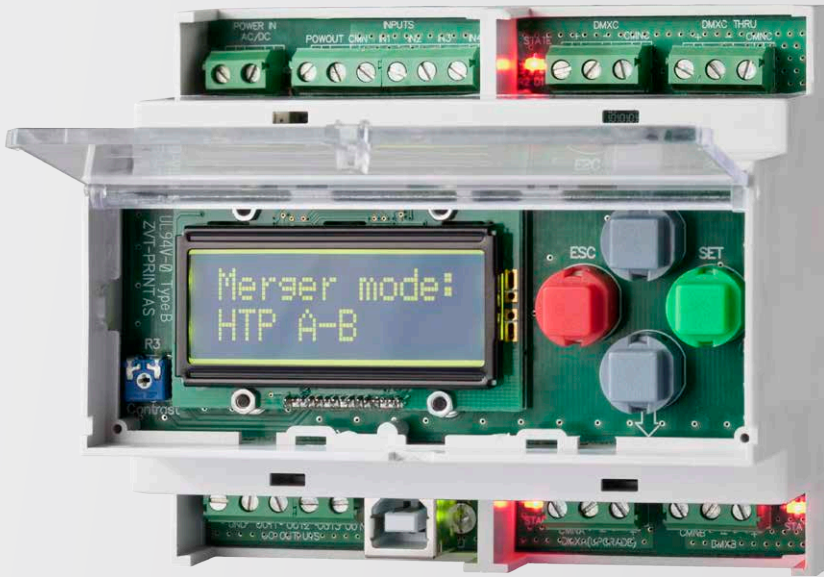
## DXD-8NI

- 1U, 19" rack-mount
- LCD display, encoder and 2 buttons
- DMX status, merger modes on display
- Signals on all DMX/RDM outputs are boosted
- DMX channel offset for each input and output
- DMX scenes / HTP / LTP / FTP rules
- Firmware update via SRS upgrade cable



## DXD-DIN

- DIN rail/truss-mount
- LCD display, 4 buttons
- Signals on all DMX/RDM outputs are boosted
- DMX scenes / HTP / LTP / FTP rules
- Firmware update via SRS upgrade cable



The DXD series unit is a two-input DMX merger with HTP / LTP / DMX-A or DMX-B backup modes. It is ideal for applications where merging of two DMX signals is needed. Examples of usage are two DMX consoles controlling one dimmer system or controlling of house light

The DXD merger can also be used as a scene call device for calling of the minimum DMX value. This value is then sent to the dimmer with connected LED lights in case the main console is disconnected or LED lights are flickering on low DMX value.

# DMX DE/MULTIPLEXERS

The SRS's Multiplexers and Demultiplexers are available in a 19" rack mounting case or a small metal enclosure. Demultiplexers with 16, 48 or 64 channels are fitted with 25-pin D type connectors for analog connection, DMX input/output and a low voltage power inlet.



## DTA1664 / DTA1248 DEMULTIPLEXER

- 64/48 x Analog 0-10V outputs
- Sequential test function
- Outputs are short-circuit protected



## DTA16 DEMULTIPLEXER

- 16x Analog 0-10V outputs
- Sequential test function
- Outputs are short circuit protected





# SPECIAL DEVICES

## LIGHT CONSOLES

Housed in a 19" rack mounting case or a wall-mount version with an ultra low profile body, the SRS consoles are available in variety of sizes. All units are fitted with the DMX output, analog 0-10V output and optionally the W-DMX® output. With the USB module you are able to change the DMX start address or play the scenes from a USB key.

### DAC18 / DAC12

- 3U, 19" rack/wall-mount
- 19/13x Long Lasting 60mm slide faders with dust cover
- 19/13x Flash button
- DMX + Analog 0-10V output



### DAC6

- Wall-mount ultra low profile body
- 7x Long-life 60mm slide faders with dust cover
- 7x Flash button
- DMX + Analog 0-10V output



# ALD SERIES

ALDseries unit was created as the cost-effective solution for all LED applications. ALDseries devices aren't equipped with the power supply so you can select the right one according to the used LED tube or stripe, which saves money when other power supply is used in installation.



### ALD DEVICE

- 8 / 16-bit LED dimmer
- 3 / 4 / 6-channel LED dimmer
- Variable voltage outputs 12V / 24V

type	LED dimming/driver function
ALD 3D24	DMX LED dimmer 3x 12-24V
ALD 6D24	DMX LED dimmer 6x 12-24V
ALD 6REC3	DMX LED driver 6x 350mA
ALD 6REC7	DMX LED driver 6x 700mA
ALD 6REC10	DMX LED driver 6x 1000mA



# DIN DEVICES

DMX devices housed in a DIN enclosure are an ideal solution for architectural usage. The wide choice of variants gives the engineers the opportunity to control the intelligent installation through the S.net, RS-232, RS-485, USB, DMX or DALI interface.



type	function
DTA16-DIN	DMX / 16-channel demultiplexer
ATD16-DIN	DMX / 16-channel multiplexer
DTA6R4-DIN	DMX / 6 Analog 0-10V + 4 relay outputs
DTS16R-DIN	DMX / 16 Relay switching channels
DTS16F-DIN	DMX / 16 N-Mosfet switching channels
ATD16-DIN	DMX 16-channel multiplexer
DSD6-DIN	DMX 6-channel splitter/booster
DXD-DIN	DMX merger





PROJECTOR SHUTTER

- Fits most video projectors from small to large scale
- Test / Mirror function switch
- Ultra torque servo
- Wide choice of projector flaps
- DMX, USB or switch controlled
- SRS straps for easy fitting



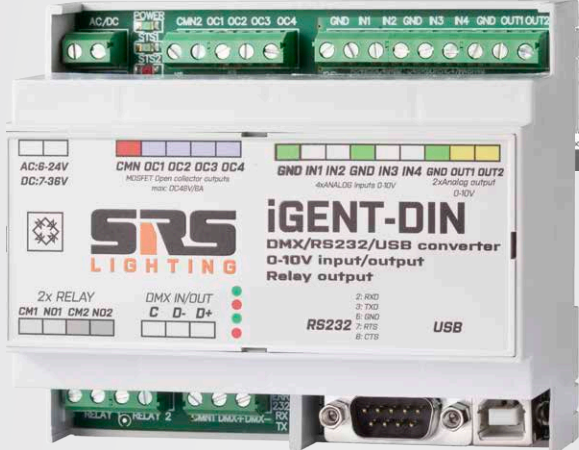
Housed in an easy to snap-in metal enclosure, the Projector Shutter is widely used in variety of projectors. The device provides video black-out by obstructing the light beam. The Ultra-torque servo offers precise movement even for big flaps needed for ultra wide lenses of a projector.

SRS switch control over DMX cable allows control of the device without DMX. SRS USB control cable allows control of the device via USB.



IGENT / IAGENT-DIN

- Controll any RS232 / RS422 device over DMX: Projector, DVD player, ...
- Optically isolated RS232, RS422, DMX 512
- Easy to configure via PC application
- USB programming port
- Optional W-DMX®
- SRS straps for easy fitting







| SRS Group s.r.o.  
Rybníčná 36/D  
831 07 Bratislava  
Slovak Republic

| [www.srs-group.com](http://www.srs-group.com)  
[sales@srs-group.com](mailto:sales@srs-group.com)  
phone: +421 2 4468 1417  
fax: +421 2 4468 1419